



The Connection

PAST ISSUES | WWW.NAWIC.ORG

September 22, 2020

Association News

Is Your Contact Information Up to Date?

Make sure you don't miss out on any important NAWIC news or opportunities by ensuring that your contact information and details (address, email, company, etc) are updated and correct in our database!

To do this, log in and visit the [NAWIC Member Center](#), then select "Update Your Info" in the light blue bar at the top.

NAWIC Partners with NGA to Support Women in Construction

WOMEN EXECUTIVES ROUNDTABLE DISCUSSION TAKING PLACE AT GLASSBUILD CONNECT.



National Glass Association (NGA) is pleased to announce its partnership with the National Association of Women in Construction (NAWIC) to host a joint roundtable discussion during GlassBuild Connect.

"The National Glass Association is proud to partner with NAWIC to support women in construction," said Nicole Harris, NGA president & CEO. "We know there are barriers still, and we can all do more to remind everyone that it's good business to tap this underrepresented 50% of the population, especially now when everyone is so challenged to find and recruit talent."

In the midst of an ongoing labor shortage, this discussion will address how companies can recruit more women into the construction field and also take a look back at how the state of women in construction has changed over the past decade. The panel of women executives include:

Anne Pflieger, CIT - National President, NAWIC; Estimating, Safety and HR Administrator, Charles Construction Services, Inc.

Lauline Mitchell – National Vice President, NAWIC; Project Manager, BBI Construction

Doreen Bartoldus, PE, CCM, ENV SP, DBIA Assoc. – National President-Elect, NAWIC; Management Leader, Jacobs Engineering

Nataline Lomedico – President & CEO, Giroux Glass

Diana San Diego - VP of Marketing, SAFTI FIRST

Moderator: Katy Devlin - Associate Publisher and Editor-in-Chief, Glass Magazine

"NAWIC's core purpose is to strengthen and amplify the success of women in the construction industry," explains Anne Pflieger, NAWIC national president. "Organizations like the National Glass Association are great resources and partners in constructing the conduit to break down those barriers. Together, the NAWIC and NGA partnership can become the conduit to connect and communicate collaboratively to have the conversations that will break the barriers women are facing in the construction industry."

The Women in Construction roundtable will take place on **Monday, Sept. 28 at 2:30 p.m. ET** with a live Q&A session following the presentation.

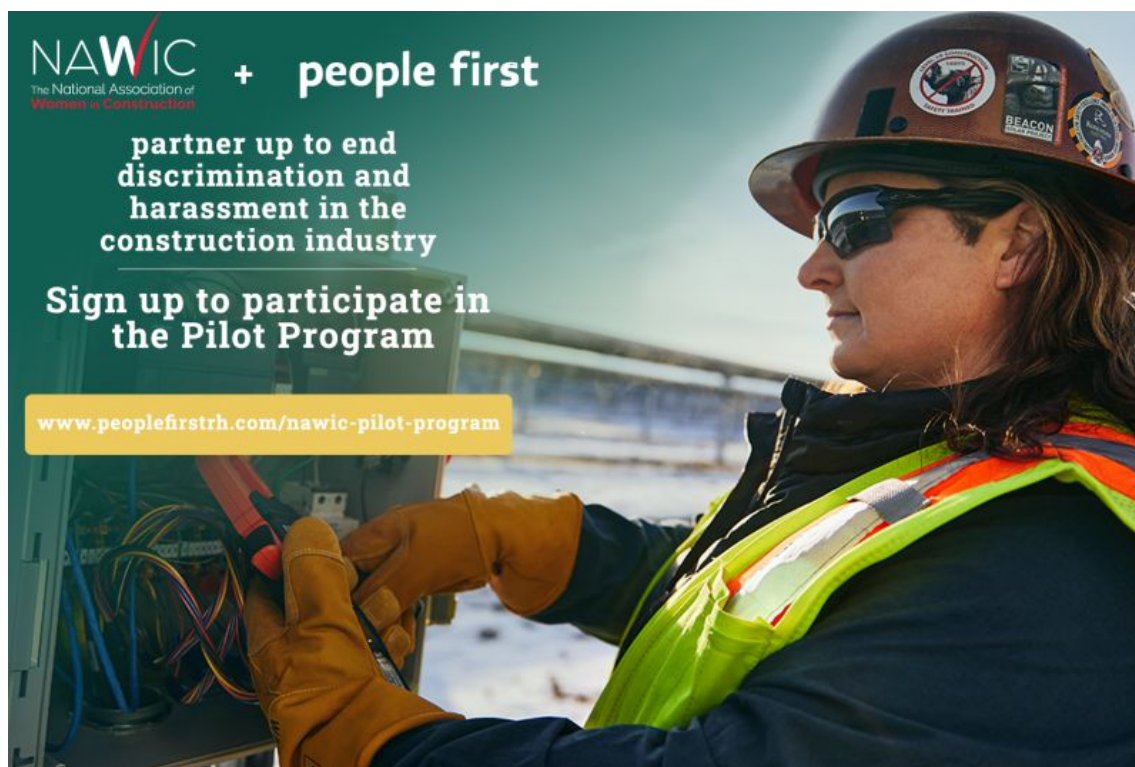
This session is included with free registration to GlassBuild Connect. For more information, visit [GlassBuildAmerica.com](https://www.glassbuildamerica.com).

NAWIC + People First Pilot Program

NAWIC and People First RH have come up with a solution to end discrimination and harassment, but we need partners in our pilot program to make this happen.

If you own a firm in the AEC industry or are in HR or D&I please join us! We are implementing software that will help stop discrimination and harassment at your firm dead in its tracks. The deadline to sign up for the pilot program is fast approaching - Oct. 1! Use this [link](#) to sign up.

For more information about how the technology will work, you can watch this [webinar](#).



Education / Training

Girls Garage: Reading and Discussion

Join Emily Pilloton—Founder and Executive Director of Girls Garage and a PopTech Social Innovation Fellow—for a reading and interactive discussion of her book, *Girls Garage: How to Use Any Tool, Tackle Any Project, and Build the World You Want*.

Wednesday, Sept. 23 at 9:30 a.m. PST. Register [here](#).

Join Emily for a live reading and interactive discussion of the Girls Garage book!

Wednesday, September 23, 9:30am Pacific



P!
PopTech

[POPTECH.COURSE.TC/CATALOG/COURSE/GIRLS-GARAGE](https://poptech.course.tc/catalog/course/girls-garage)

Falling Object Hazards and Accelerated Work Schedules: A Recipe for Incidents



IMPACT INTERNATIONAL SAFETY CALL
"Because SAFETY is Your Call"
 Hosted by Pete Hayes, President, Red Cedar Steel

Please join Pete Hayes for this interactive webinar addressing the growing concerns about falling object hazards, accelerated work schedules and requirements for tool tethering. Panelists Steve Rank, Wayne Creasap and Jeff Norris from the Iron Workers Safety Department will address the following:

- Accelerated work schedules mandated by end users and controlling contractors.

- OSHA and provincial falling object standards pertaining to controlling contractors.
- Requirements for “tool tethering” for all ironworker tools and activities.
- Tool tethering is NOT a substitute for the OSHA and provincial standards.
- Potential hazards and incidents related to tool tethering.
- Superintendent, foremen and field ironworker instructions on roles of supervision pertaining to the OSHA and provincial falling object standards.
- Sample responses and notification letters to controlling contractors pertaining to the OSHA and provincial falling object standards.

Don't miss this opportunity to join a discussion on how to prevent workplace incidents, costly job site delays and litigation!

Wednesday, Sept. 30, 2020

11 a.m. ET

Register [here](#).

Webinar: Survival Essentials in the Age of COVID-19



Hear from three top industry leaders on how to prepare, adjust and come out on top.

Oct. 8, 2020

11 a.m. - 12:30 p.m. ET

Virtual Presentation Link will be sent after registration. Estimated value of this program is \$450; [registration is complimentary](#).

SPEAKERS



Lori Fay, President @Loxme Group, Inc

Lori Fay has helped thousands of small and emerging contractors develop a bonding program that fits their needs without breaking the bank or imposing hard conditions such as collateral and/or funds management. In this program, Lori will outline what you can do to help put yourself ahead of your competition and get the bonding support you need.



Chris Colabella, President @Construction Information Systems

Construction information Systems is an essential resource for finding your next job. Chris Colabella will show you how to use this invaluable system to search for new opportunities so you can get the work you need. *As a bonus, all participants will receive one free month of CIS Leads NYC Territory, a value of over \$300.



Michael Riegel, Director @A/E/C Business Strategies

A/E/C Business strategies has developed key strategies for working smarter not harder. Mike Riegel, who literally wrote the book on this, will outline some key components you should consider in improving upon your bottom line. This is something you can't "afford" to miss.

The first ten registrants will receive a free copy of Mike Riegel's book, *Build like the Big Primes*.

******ADDED BONUS******

All Participants will receive a FREE GIFT and one free month of CIS Leads NYC Territory, a value of over \$300.

NAWIC Leadership Book Club

Have you ever felt stuck? You know you can have more out of life but just don't know the next steps to take. It could be related to your work or personal life.

It happens to all of us. We get stuck in little ways and big ways. The reasons we're stuck are important, and the solutions come from unexpected places. This book study will help each person recognize why they got stuck in the first place and what steps will help them move forward.

Join the NAWIC book club to discuss general principles as you work through your own area of stuckness. The author, Catherine A. Brennan, will join each week with a short video or live presentation. We all get better as we learn from one another.



Catherine A. Brennan is a business owner, author, public speaker, blogger, community activist, athlete, mother, grandmother, and most importantly, **a depression survivor**.

She has lived in Mankato, MN since 1994 where she has run a construction and development company with her husband, Mike. Cathy is a public speaker on the topic of wellness and wrote a book titled **So Now What? A Guide for People Who Feel Stuck**.

In her 50s, Cathy, found her 'inner runner' and has run the Boston Marathon three times. She has also run the New York City Marathon and participated in numerous triathlons. She is an avid swimmer, biker, golfer, and loves to read. She and her husband have two married sons and one grandson.

Live Monthly Discussion Groups:

First Thursday, 4:30 p.m. CT

Second Tuesday, 11:30 a.m. CT

Facebook Group: Discussions posted weekly. Join the group [here](#).

If you would like to join an existing group or start a new group, contact Lori Donnell at lorid.nawic@gmail.com.

Industry Update

ICC Offers Guidance for Remote Virtual Inspections

In addition to helping inspectors do their jobs during the COVID-19 pandemic, remote virtual inspections also can save building departments time and money.

Source: *ConstructionDive*

[Learn More...](#)

What to Do When An Employee is Afraid to Return to Work Due to COVID-19

If an employee refuses to work although there is no imminent danger, "the courts have made it clear that those employees don't have to be paid," says a human resources expert.

Source: *ConstructionDive*

[Learn More...](#)

Researchers Receive Patents for Prestressed Concrete Innovation

Swiss researchers have patented a process that could help lower the cost and environmental footprint of the world's most widely used building material.

Source: *Popular Mechanics*

[Learn More...](#)

Calendar

23

Sep 2020

Girls Garage: Reading and Discussion

9:30 AM PST

[Learn More...](#)

28

Sep 2020

NAWIC/NGA Roundtable

2:30 EST

[Learn More...](#)

30

Sep 2020

Impact International Safety Call

11 AM EST

[Learn More...](#)

1

Oct 2020

NAWIC + People First Pilot Program Registration Deadline

[Learn More...](#)

Pacific Southwest Fall Conference

2
Oct 2020

October 2-3
El Paso, TX
Hybrid Conference
[Learn More...](#)

8
Oct 2020

Loxme Webinar
11 AM - 12:30 PM EST
[Learn More...](#)

9
Oct 2020

Pacific Northwest Virtual Fall Conference

9
Oct 2020

Southeast Region Virtual Fall Conference
October 9-10
[Learn More...](#)

10
Oct 2020

South Central Region Fall Virtual Conference
[Learn More...](#)

13
Oct 2020

PD&E Webinar: You've Got This - How to Connect, Collaborate and Construct the Life You Want Despite the Difficulties You Face!
Speaker: Kendra Davies, CEO, Stellar Life Coaching
12 PM ET/ 11 AM CT
[Learn More...](#)

15
Oct 2020

Membership & Marketing Webinar: Membership Retention
11:00am PST / 12:00pm MST / 1:00pm CST / 2:00pm EST
[Learn More...](#)

16
Oct 2020

Midwest Region Virtual Fall Conference
[Learn More...](#)

Northeast Region Virtual Fall Conference

23
Oct 2020

October 23-24
[Learn More...](#)

6
Nov 2020

North Central Region Virtual Fall Conference
November 6-7

6
Nov 2020

South Atlantic Region Fall Conference
November 6-7
[Learn More...](#)

10
Nov 2020

PD&E Webinar: The Power of Two - NAWIC Mentorship Program
12 PM ET/ 11 AM CT
[Learn More...](#)

19
Nov 2020

Membership & Marketing Webinar: National Rebranding
11:00am PST / 12:00pm MST / 1:00pm CST / 2:00pm EST
[Learn More...](#)

The National Association of Women in Construction

327 S. Adams St. - Fort Worth, TX 76104
817-877-5551 or 800-552-3506
nawic@nawic.org

