



# The Connection

PAST ISSUES | WWW.NAWIC.ORG

October 13, 2021

## Association News

### DE&I Committee supports Construction Inclusion Week

 The banner features the EnvisionEquity logo on the left and the NAWIC logo on the right. The NAWIC logo includes the text 'The National Association of Women in Construction' and 'DE & I COMMITTEE'. Below the logos, the text reads 'DAY 1: October 18th, 2:00 PM EST / 11:00 AM PST'.
 

**DAY 1: October 18th, 2:00 PM EST / 11:00 AM PST**

**Inclusive Leadership: The Talk & The Walk!**

In this 60 minute interactive conversation, led by Gerri Harris with G. Harris Consulting, LLC, Mitch Savoie Hill, CPC with SavHill Consulting, LLC, and Laura Lapidus, Esq. with CNA Insurance, we will share stories, tips, and industry trends that will inspire and strengthen a leader's conversation and provide guidance on actions that reflect commitment and accountability to construction inclusion.



**Mitch Savoie Hill, CPC**



**Gerri Harris**



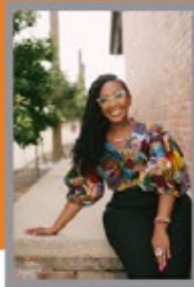
**Laura Lapidus, Esq.**



## DAY 2: October 19th, 2:00 PM EST / 11:00 AM PST

### Power, Privilege, Oppression & Implicit Bias

In this session, led by Dr. Sharbreon Plummer, participants will examine how power, privilege and issues of oppression influence our leadership and learn how to recognize implicit bias within themselves. We will also examine conscious and unconscious bias using the Implicit Bias Photo Exercise.



90 min. Workshop  
Facilitated by:

LEADERSRING CENTER  
Creating Equity + Transformation

NAWIC  
The National Association of  
Women in Construction  
DE & I COMMITTEE

### Sharbreon Plummer, PhD

Sharbreon Plummer (Baton Rouge, LA) is an artist, strategist and educator with over twelve years of experience across a spectrum of community engagement, racial justice and cultural stewardship roles. Her upbringing in the deep south and connection to Black matrilineal teachings shape her worldview and approach to coaching and facilitation. Sharbreon has served as an Alliance of Artist Communities Diversity and Leadership Fellow and YWCA Leadership for Social Change Fellow. She has developed work presented in/for institutions such as Project Row Houses, Rush Corridor Gallery, the African American Museum in Philadelphia, Hampshire College, Americans for the Arts and Blaffer Museum. She aims to support individuals and organizations in facing challenge points head on through a human-centered approach rooted in lived experience and storytelling as sites of inquiry. She is the founder of AYA Thought Studio and serves as a Consultant with LeaderSpring Center and an Adjunct Professor in the University of Houston's M.A. in Arts Leadership program.

[Find out more here.](#)

## Let Data & Analytics Empower Your Results



As the leading provider of risk solutions to the construction industry, Aon Construction Services Group partners with our clients to provide insightful analysis, strategic direction and creative solutions backed by our dedicated team of construction experts and the strength of Aon's global network.

[Visit our website to learn more about our client-facing solutions](#)

[Learn More](#)

Advertisement

Build. Lead. Succeed. releases new episode



In this episode of Build. Lead. Succeed., host Angela Highland sits down with Jennifer Ponce de Leon, Senior Business Development Manager with JEM Construction Services Group, as she discusses her path through the construction industry.

[Listen now...](#)




---

## Education / Training

---

## PD&E presents: Hiring a More Diverse Workforce



PD&E Committee is partnering with DEI Committee during Construction Inclusion Week October 18-22, 2021 to provide meaningful awareness on the different challenges and successes with regards to inclusivity in the industry.

<https://www.constructioninclusionweek.com/>



### About our presenter:

Ashley Keyes is One Workplace Diversity, Equity & Inclusion Project Manager. Ashley has an undergraduate degree from Syracuse University and a graduate degree from Kettering University. Keyes' work experience includes working in supply chain/operations management meeting mission critical objectives for GM, Apple, and Amazon, and conducting diversity research and data analysis at Columbia University. In her position at One Workplace, Keyes uses her passion for DEI to serve her mission to bring meaningful, lasting change to the entire One Workplace community.



### In this session:

Ashley's presentation will provide some insights on her experience in working with different companies' diversity initiatives. What does it do to an organization to have a diverse workforce? How do we attract more diversity into our company? What strategies can we implement to have a culture that celebrates and promotes valuable diverse talents to an organization?



For over the past 70 years, One Workplace have been helping clients bring big visions to life.  
[www.oneworkplace.com](http://www.oneworkplace.com)

## Hiring a More Diverse Workforce

Presented by:

**Ashley Keyes,**  
One Workplace Diversity,  
Equity, and Inclusion  
Project Manager

OCTOBER 20, 2021

9:00 AM PST/11:00 AM CST/12:00 PM EST

REGISTRATION:  
[HTTPS://WWW.NAWIC.ORG/NAWIC/WEBINARS.ASP](https://www.nawic.org/nawic/webinars.asp)

[Learn More...](#)

## NAWIC Benefits Spotlight

### The Coaching Corner with Michael Riegel: Resilience: Bouncing Back from Setbacks



"I have not failed. I've just found 10,000 ways that won't work." This Thomas Edison quote could be the operating philosophy for many construction professionals and the embodiment of resilience, flexibility and adaptability. How can we define resilience? Why is flexibility and adaptability central to personal and organizational success? After 2020 and most of 2021, many of us probably feel like we have a good sense of what this is all about.

[Read More...](#)

## Driving Innovation from Concept to Construction



As the industry continues to evolve, being innovative throughout all phases of construction is of growing importance. Join us for a fireside chat with Michael Conley, Project Executive at Kaufman Lynn Construction, to hear about their approach to innovation.

[Register Now](#)

Advertisement 

---

## Industry Update

---

### Steel, roofing materials shortage hamstrings construction

Shortages of key materials including steel and PVC pipes continue to hamstring the construction industry, pushing up prices and delaying deliveries, according to August data from Gilbane Building Company.

[Learn More...](#)

### Construction's diversity numbers are awful. Here's how 3 contractors are improving theirs.

Leaders from PCL, Turner & Townsend and XL Construction detail the strategies they are using to tackle the issue.

[Learn More...](#)

### The top 10 home building companies of 2021

Residential construction is booming. Here is where it's the hottest and which contractors are cashing in the most.

[Learn More...](#)



## Calendar

**16**  
Oct 2021

**Pacific Northwest Region Fall Conference**  
[Learn More...](#)

**18**  
Oct 2021

**Construction Inclusion Week**  
[Learn More...](#)

**18**  
Oct 2021

**DE&I Webinar - Inclusive Leadership-The Talk and The Walk!**  
[Learn More...](#)

**19**  
Oct 2021

**DE&I Webinar - Power, Privilege, Oppression & Implicit Bias**  
[Learn More...](#)

**20**  
Oct 2021

**Women Business Owner Industry Council Webinar**  
[Learn More...](#)



**20**  
Oct 2021

**PD&E - Hiring a More Diverse Workforce Webinar**

[Learn More...](#)

**22**  
Oct 2021

**Midwest Region Fall Conference**

[Learn More...](#)

**28**  
Oct 2021

**Northeast Region Fall Conference**

[Learn More...](#)

**29**  
Oct 2021

**Pacific Southwest Region Conference**

[Learn More...](#)

**29**  
Oct 2021

**North Central Region Fall Conference**

[Learn More...](#)

**The National Association of Women in Construction**

327 S. Adams St. - Fort Worth, TX 76104

817-877-5551 or 800-552-3506

nawic@nawic.org

