



The Connection

PAST ISSUES | WWW.NAWIC.ORG

November 10, 2020

Association News

Stopping the Stigma: Kat Dobson and Angela Cloud Present at 2020 Safety Leadership Conference

Many of you have had the chance to attend one of Kat Dobson's amazing presentations about suicide and mental health in the construction industry. This week, she and Angela Cloud will be presenting a panel on this topic - "**Crisis in Construction: Mental Health and Suicide Awareness**" - at the 2020 Safety Leadership Conference.

Check out the article highlighting Kat and Angela on the [EHS Today site](#), and please join us in congratulating and thanking them for their excellent work in the fields of safety and mental health!

NAWIC Has a New Blog!



If you haven't heard yet, NAWIC has a new [blog](#). Our first few feature articles are up, so check them out and let us know what you think!

We'll be regularly posting new content and featuring hot industry topics. If you have any topics YOU would like to see covered on our blog, email ambers@nawic.org and share your requests.

Also on our blog, we'll be featuring our very own NAWIC industry rockstars in our "[Best Person for the Job](#)" column. Are you doing great things in the construction industry (ok, we know you are), fill out the [application](#) and brag on yourself a little (or nominate someone you think deserves the recognition).

WANTED:
BEST PERSON FOR THE JOB

NAWIC is starting a new series highlighting our incredible members, and we want to feature YOU!

To apply (or nominate someone):

- Grab the form here: www.nawic.org
- Send completed form here: crissy@nawic.org
- See YOUR name and photo on the NAWIC website and social media pages!

New NAWIC Diversity, Equity and Inclusion Task Force



NAWIC Members are priority to this organization. As such, we endeavor to become an ally to you - wherever you are in your career and your personal journey. Inclusion is what led us to NAWIC, and diversity is what makes our organization better.

The Diversity, Equity and Inclusion (DE&I) Task Force is aimed at providing an elevated level of representation and efficiency in our outreach, programs, and membership. The task force has developed a simple [assessment](#), and we would love your participation to help us better understand our members and their needs within the organization.

NAWIC Diversity, Equity, and Inclusion Task Force

Team Chair: Rowena Dziubla (MWR)

Team Lead: Rita Brown (NCR)

Board Advisor(s): Doreen Bartoldus, Lauline Mitchell & Kristey Stewart

Members: Romina Byrd (NER), Gerri Harris (PSW), Chandra Jones (SCR), Jennifer Morales (SER), Argelia Simon (SCR), Sherita Evans (SAR), and Jeanine Cooper (PSW)

New Chapter Alert!



On **November 17, 2020**, NAWIC will hold a chartering meeting for our newest chapter, **Montana 387!**

Find details on joining us for this meeting [here](#).

Get Prepped for WIC Week with Pins and Posters!



WIC Week 2021 (March 7-13, 2021) will be here before we know it! Get your planning off the ground with this year's posters and pins, which are ready to order.

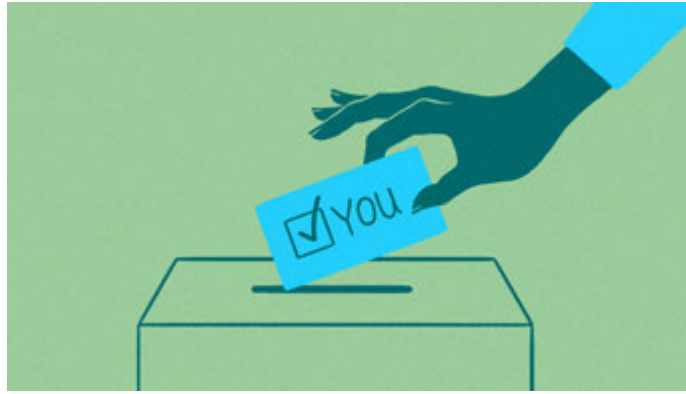
We can't wait to meet all your WIC Week partner companies and see all the amazing activities you have in store!

Stay up to date by following the WIC Week Committee on social media (@NAWICWICWeek), and get all the forms and information you need on the [WIC Week webpage](#).



2021-2022 National Officer & Region Director Candidate Applications

Thinking of running for a position as a NAWIC National Officer or Region Director? Download the Candidate Application [here](#).



All applications must be submitted by Feb. 1, 2021.

Education / Training

NAWIC PD&E and ECS Webinar: Selecting the Correct Foundation System

Join NAWIC PD&E Committee and ECS on Thursday, November 12 (11 AM-12 PM CST) for "[Selecting the Correct Foundation System](#)".

Attendees will learn selection criteria for a foundation systems, types of foundation systems and the differences and comparison of the different foundation systems.

(AIA 1 LU; PDH 1 Credit)

NAWIC OSHA 10 Certification Pilot Program

NAWIC is excited to offer a new **OSHA 10 Certification Pilot Program!**

The first class will be **December 9-11**. This course will be instructed by our very own Kat Dobson and Cindy Spiropoulos, and it will be offered at a **specially discounted introductory rate**.

Attendance is limited to the first 40 registrants, so don't wait!

SAFETY: THE RESOLUTION YOU'LL NEVER REGRET

**NAWIC
OSHA 10
PILOT PROGRAM**

KATHLEEN DOBSON
CSP, CHST, STS-C, LEED AP BD+C

CINDY SPIROPOULOS
CIT, LEED GA

DECEMBER 9, 2020
2:30-6:30 PM EST

+

DECEMBER 10-11, 2020
11 AM - 3:15 PM EST

COST: \$39 (MEMBERS); \$45 (NON-MEMBERS)
****LOW-COST INTRODUCTORY RATE FOR PILOT PROGRAM****

TO REGISTER: email NAWIC Executive Director Crissy Ingram, CAE
by **December 7th** at crissy@nawic.org.

****REGISTRATION IS CAPPED AT 40, SO DON'T WAIT!****



Safety + Health Webinar: A Proactive Approach to Weld Fume Management - How to Assess, Plan and be Prepared Amid the New Environment

Thursday, November 19, 2020

12-1 PM CST

[Register now!](#)

SUMMARY

In an ever-changing environment, stay up to date with the latest information regarding weld fume controls and how to keep your environment clean and compliant.

In this webinar, our experts will navigate OSHA's Hierarchy of Controls, walking you through key steps and recommendations to implement weld fume solutions in relation to each tier of the hierarchy. They will discuss best practices for weld fume management to help you identify and determine an effective approach plan best suited for your workplace, helping to improve productivity, efficiency and air quality.

Key topics that will be discussed:

- Common base metals associated with welding
- Factors that can impact operator exposure
- How to identify and assess welding fume particulate in your work environment
- How to mitigate risk following OSHA's Hierarchy of Controls, considering the most feasible and effective solution options
- Short- and long-term benefits of controlling welding fume in your work environment

SPEAKERS

Bert Schiller

Industrial Hygienist

Bert is an industrial hygienist certified in the Comprehensive Practice of Industrial Hygiene. He has more than 35 years of experience with a wide variety of industries. Bert also worked with OSHA in Michigan for five years and has taught at the University of Michigan for the past five years.

Jeremy Bruesewitz

*Product Specialist, Welding Safety and Health
ITW Miller Electric Welding*

Jeremy is a product specialist for the welding safety and health team at ITW Miller Electric Welding. He has more than seven years of experience, specifically focused in weld fume extraction, and works directly with engineers at Miller to identify end user needs to develop fume extraction products to address those needs. Jeremy also works directly with end users on designing proper fume extraction systems for their facility.

Kevin Quinn

*Welding Safety Solutions Manager
ITW Miller Electric Welding*

Kevin is a welding safety solutions manager with ITW Miller Electric Welding. He has more than 12 years of experience within industrial safety, with a focus on respiratory protection. In his role with Miller, he works with industrial customers to address welding fume issues to protect their workers and the environment.

Susan Fiore

*Advanced Applications Manager
ITW Hobart Brothers Welding*

Susan is an advanced applications manager with ITW Hobart Brothers Welding. She is a materials engineer with more than 30 years of experience in the welding industry and is a fellow of the American Welding Society. Her expertise covers a broad range of welding and weldability-related concerns. She has worked extensively in the area of weld safety and health. In her current role with Hobart, she works closely with customers to resolve issues and to promote new ideas and welding innovations. Susan is past chair of the

American Welding Society Safety and Health Committee, and currently serves as the chair of the AWS Safety and Health Subcommittee on Fumes and Gases.

Kevin Druley

Associate Editor - Moderator

Safety+Health Magazine

Kevin Druley covers worker safety for Safety+Health magazine. He will moderate this session.

Building Healthcare: Envisioning the New Normal

Are you a construction professional involved in the healthcare space? Does your company provide construction and design services to healthcare clients? You need to understand what's really happening in healthcare following the pandemic.

RESET and the American Institute of Constructors (AIC) are co-sponsoring a webinar on Tuesday morning, **November 17th at 10:00 a.m. CST** covering the most important issues to align with right now.

The webinar will feature plugged-in executives Sally Jeffcoat (former EVP Trinity West/Midwest Group, VP/COO Ascension Health, and Regional Health system CEO's for Ascension, HCA and Christus) and Shawn Cloonan (former COO at Texas Medical Center), as moderated by RESET CEO Wayne O'Neill. **In this webinar, you will learn about:**

- Healthcare operational changes that will become more permanent.
- Substantial changes to supply chain, patient intake, and patient flow.
- The REAL business and political issues in healthcare.
- How all of this leads to a building envelope.

Building Healthcare: Envisioning the New Normal
 with Wayne O'Neill, Shawn Cloonan, & Sally Jeffcoat
 November 17th, 10-11am



**AMERICAN INSTITUTE
of CONSTRUCTORS**
THE MARK OF A PROFESSIONAL
www.AIC-Builds.org

Co-Sponsor



Wayne O'Neil
CEO of RESET



Sally Jeffcoat
Former EVP Trinity West/Midwest Group, VP/COO Ascension Health, and Regional Health system CEO's for Ascension, HCA and Christus



Shawn Cloonan
General Counsel for McCord Development, Inc.



Co-Sponsor

Industry Update

What's in store for contractors under a Biden presidency?

Marijuana initiatives pass in 5 states: What contractors need to know

Calendar

<p style="font-size: 2em; font-weight: bold;">12</p> <p>Nov 2020</p>	<p>NAWIC/ECS Webinar: Selecting the Correct Foundation System</p> <p>11 AM CST</p> <p>Learn More...</p>
--	--

<p style="font-size: 2em; font-weight: bold;">17</p> <p>Nov 2020</p>	<p>Autodesk University (AU) 2020: Reimagine Possible</p> <p>November 17-20</p> <p>FREE!</p>
--	--

[Learn More...](#)**17**

Nov 2020

Montana Chapter Chartering

6:00 p.m. CST | 7:00 p.m. EST | 5:00 p.m. MST | 4:00 p.m PST

[Learn More...](#)**17**

Nov 2020

Building Healthcare: Envisioning the New Normal

10-11 AM CST

[Learn More...](#)**19**

Nov 2020

Membership & Marketing Webinar: National Rebranding

11:00am PST / 12:00pm MST / 1:00pm CST / 2:00pm EST

[Learn More...](#)**19**

Nov 2020

Weld Fume Management Webinar with Safety + Health

12 - 1 PM EST

[Learn More...](#)**30**

Nov 2020

National Leadership Webinar: Getting Involved on the National Level

6 PM CST

[Learn More...](#)**9**

Dec 2020

OSHA 10 Certification Pilot Program

December 9, 2:30-6:30 PM EST

December 10-11, 11 AM - 3:15 PM EST

To Register: email crissyj@nawic.org**9**

Dec 2020

NAWIC-OSHA Alliance Committee: OSHA Update - What You Need to Know for 2021

6:00 p.m. CST | 7:00 p.m. EST | 5:00 p.m. MST | 4:00 p.m PST

[Learn More...](#)**14**

Dec 2020

National Leadership Webinar: The Role of Director

6:00 p.m. CST | 7:00 p.m. EST | 5:00 p.m. MST | 4:00 p.m PST

[Learn More...](#)

The National Association of Women in Construction

327 S. Adams St. - Fort Worth, TX 76104

817-877-5551 or 800-552-3506

nawic@nawic.org

