

June 8, 2021

Association News

2021-22 National Board and Region Directors election results



Welcome to our newly elected 2021-22 National Board and Region Directors! We are excited to see what you accomplish. The members will be sworn in at Annual Conference this August in Charlotte, North Carolina.

- President-Elect: Lauline Mitchell, OSHA 30
- Vice-President: Karen Hager, CBT, CIT
- Secretary: Kelly Aust, LEED AP BD+C
- Treasurer: Jessica Huff
- Pacific Northwest Region Director: Julie Salinas
- South Atlantic Region Director: Stephany Connelly
- South Central Director Director: Rhonda Nebgen
- Southeast Region Director: Andrea Ward, CBT

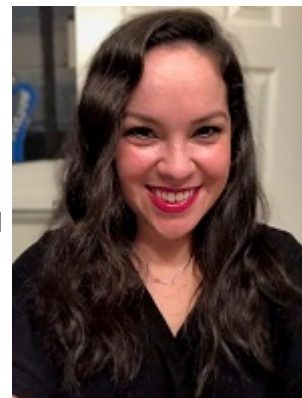
Thank you to everyone who ran for a position. We hope to see you on a future ballot!

Meet NAWIC National's Administrative Assistant

Kristen Jones recently joined the NAWIC National team as the Administrative Assistant.

Kristen grew up in Abilene, Texas where her dad was stationed at the Dyess Air Force Base before she moved to the Dallas-Fort Worth area six years ago. She has been married to her high school sweetheart for 13 years and they have a 14-year-old Labrador named Cash.

We are so excited to have you as part of our team, Kristen! Welcome to NAWIC.



Annual Conference Sneak Peak: Transforming the Construction Industry is an Inside Job panel

**2021 NAWIC
Annual
Conference
August 12th
4:30PM-6:00PM**

**Presented by
NAWIC's DE&I
Committee**

A graphic for the 'Transforming the Construction Industry is an Inside Job' panel. It features five black and white portraits of women arranged in a grid. The text '2021 NAWIC Annual Conference August 12th 4:30PM-6:00PM' is on the left, and 'Presented by NAWIC's DE&I Committee' is below it. The title 'TRANSFORMING THE CONSTRUCTION INDUSTRY IS AN INSIDE JOB.' is in red on the right, with a QR code below it.

**TRANSFORMING
THE CONSTRUCTION
INDUSTRY IS AN
INSIDE JOB.**

Embracing our differences is how we unite cultures to build for a stronger workforce. By expanding our workplace cultures, we can educate on construction pathways, address labor shortages, advance technology, and retain talent.

[Find out more...](#)

Education / Training

DE&I Committee: Ways to be an ally



June is Pride month. The construction industry has come a long way for inclusivity, but I know we can do better if we pause and stand together, seeing from another perspective.

When we say safety in construction, it evokes images of PPE, fall prevention, and OSHA. Seldom do we think of safe spaces for marginalized groups or being an ally for coworkers. Have you ever witnessed bullying or microaggressions and didn't know what to do? Here are a few steps you can follow to help create a safer, happier place to work.

[Learn More...](#)

Women Business Owners Industry Council: Leadership Development & Resources



*Networking
Professional Development*
YOUR VALUE WILL BE NOT IN WHAT YOU
KNOW; IT WILL BE WHAT YOU SHARE
GINNI ROMETTY, CEO, IBM

**Leadership
Development
NAWIC &
Resources**

NAWIC Women
Business Owners
ZOOM June 23
11 am PT/ 2 pm ET

Meeting ID: 827 3033 9532
Passcode: 973517

NAWIC | *Leading
Builders.
Building
Leaders.*
the National Association of
Women in Construction



NAWIC Benefits Spotlight

The Coaching Corner with Michael Riegel: Data is Important but Stories Sell



I like data. I find comfort in data. Maybe it's the ability to measure and assess and analyze with transparency and precision. This may describe you too. Our comfort with the numbers can also cloud our judgement and lead us to believe that, to prove our point, all we need to do is present the data. But what we often overlook is that, while solid data is important, effective stories are more convincing and stick with an audience. It took me a long time to recognize I would be more effective getting my point across by crafting a story and using data in support.

[Read More...](#)

Industry Update

ConTech Conversations: SDSU professor says robots 'not close' to replacing human workers

Reza Akhavian spoke with Construction Dive on the role construction robotics can play on a jobsite, including how they can benefit women in construction.

[Learn More...](#)

Amazon jobsite noose incidents highlight the challenges contractors face in combating racism

After shutting down its Windsor, Connecticut, project a second time when an eighth noose-like rope was found, Amazon said it is assessing its GC's performance.

[Learn More...](#)

Why lumber prices are spiking

An economist expects the labor part of the sawmill problem to start resolving itself later this year, but expects prices to remain high into 2022.

[Learn More...](#)

Calendar

8

Jun 2021

PD&E Webinar: Blueprint Reading 101[Learn More...](#)**9**

Jun 2021

Safety & NJ Chapter - Health & Career Coaching for Women in the Construction Industry Webinar[Learn More...](#)**16**

Jun 2021

The NAWIC National Board of Directors Monthly Meeting[Learn More...](#)**22**

Jun 2021

NAWIC Virtual Town Hall - DE&I Committee[Learn More...](#)**23**

Jun 2021

Industry Council Committee - Women Business Owner Webinar[Learn More...](#)

The National Association of Women in Construction

327 S. Adams St. - Fort Worth, TX 76104

817-877-5551 or 800-552-3506

nawic@nawic.org

